

# MONTHLY MEMBERSHIP PROGRESS REPORT

LOCATION BRITISH COLUMBIA

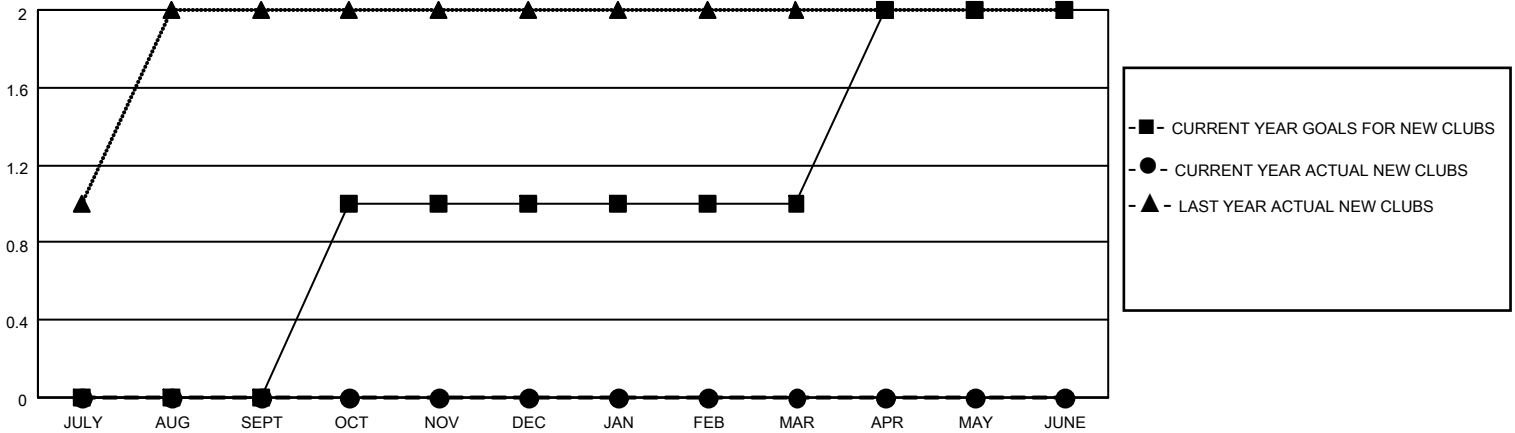
District 19 A

Results as of: 5/31/2022

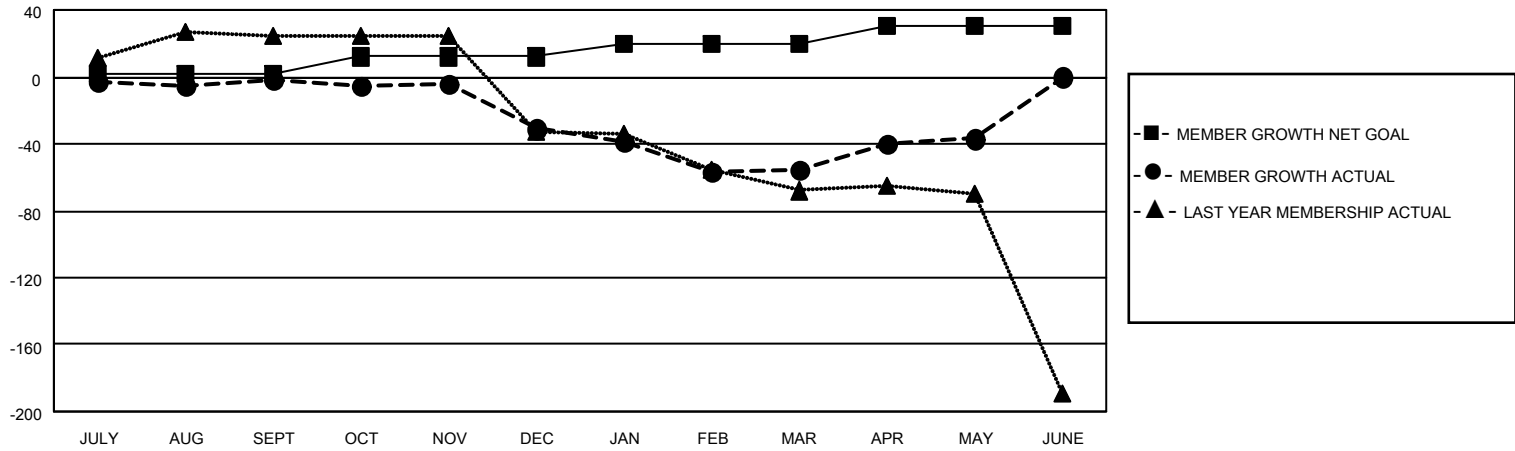
Clubs			
RESULTS FOR 2021-2022			
QUARTER	NEW CLUB GOAL	NEW CLUBS	DROPPED CLUBS
JULY/AUG/SEPT	0	0	1
OCT/NOV/DEC	1	0	1
JAN/FEB/MAR	0	0	1
APR/MAY/JUNE	1	0	0

Members			
RESULTS FOR 2021-2022			
QUARTER	MEMBER GROWTH NET GOAL	MEMBER GROWTH ACTUAL	DROPPED MEMBERS ACTUAL (including transfers)
JULY/AUG/SEPT	2	23	17
OCT/NOV/DEC	10	20	47
JAN/FEB/MAR	8	23	33
APR/MAY/JUNE	10	38	14

**GOALS AND ACTUAL NEW CLUBS CUMULATIVE**



**GOALS AND ACTUAL MEMBERS CUMULATIVE**



DROPPED CLUBS: 3	
<u>DROPPED MEMBERS</u>	
DECEASED	13
CLUB CANCELLED	31
OTHER	67
<b>TOTAL</b>	<b>111</b>

23 CLUBS OF 48 ADDED 1 OR MORE NEW MEMBERS

[CLICK HERE FOR CUMULATIVE MEMBERSHIP DATA](#)

<u>GENDER DISTRIBUTION</u>	
MALE	488 (52.25%)
FEMALE	446 (47.75%)
NON BINARY	0 (0.00%)
PREFER NOT TO ANSWER	0 (0.00%)
<b>TOTAL FAMILY UNIT MEMBERS</b>	<b>70</b>
<b>FAMILY MEMBERS PAYING HALF DUES</b>	<b>36</b>